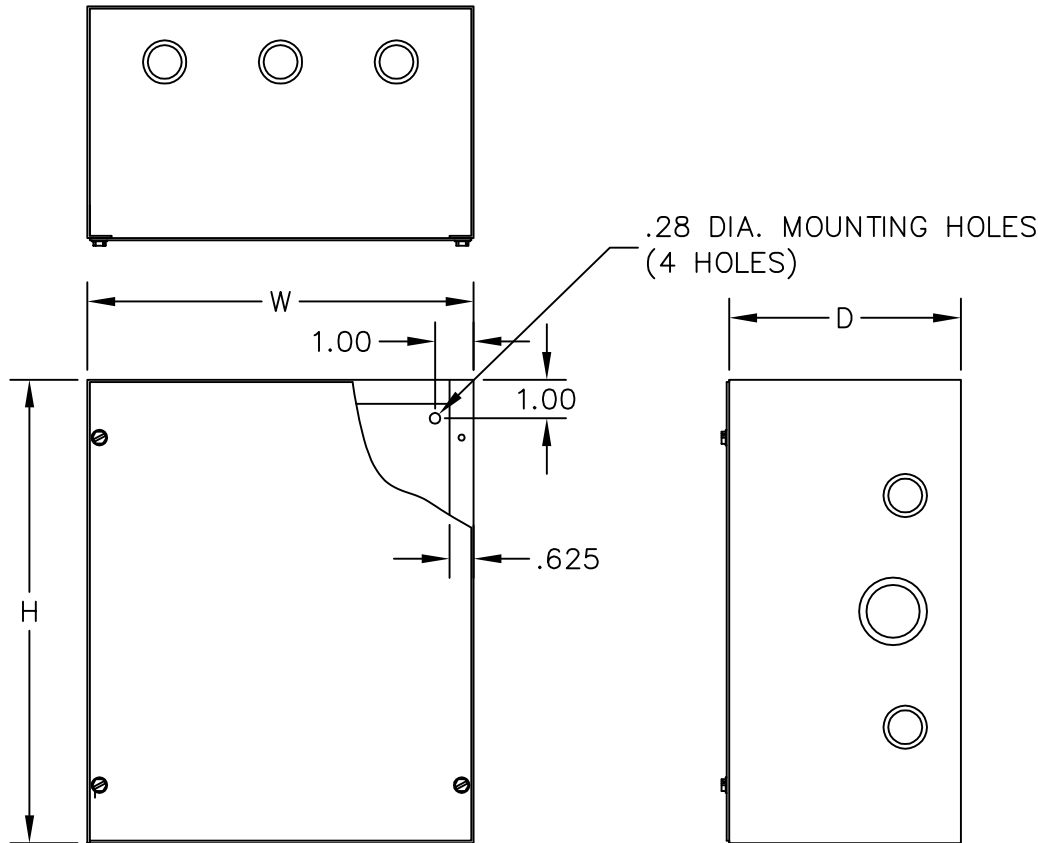


CATALOG SUFFIX SCKO

UL LISTED

CANADIAN UL LISTED



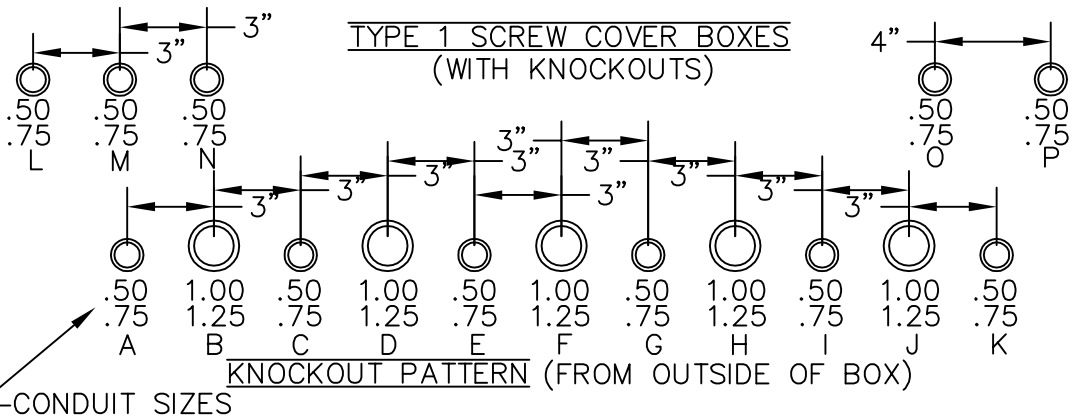
		KNOCKOUT PATTERN	
H	W	ALONG H	ALONG W
4	4	L	L
6	4	L M	L
6	6	L M	L M
6	6	L M	L M
8	6	O P	L M
8	6	O P	L M
8	8	O P	O P
8	8	O P	O P
10	6	L M N	L M
10	8	L M N	O P
10	8	L M N	O P
10	10	L M N	L M N
10	10	L M N	L M N
12	6	A B C	L M
12	8	A B C	O P
12	8	A B C	O P
12	10	A B C	L M N
12	10	A B C	L M N
12	12	A B C	A B C
12	12	A B C	A B C
12	12	A B C	A B C
15	12	A B C D	A B C
15	12	A B C D	A B C
15	12	A B C D	A B C
15	15	A B C D	A B C D
15	15	A B C D	A B C D
15	15	A B C D	A B C D
18	12	ABCDE	A B C
18	12	ABCDE	A B C
18	12	ABCDE	A B C
18	12	ABCDE	A B C
18	15	ABCDE	A B C D
18	15	ABCDE	A B C D
18	15	ABCDE	A B C D
18	18	ABCDE	ABCDE
18	18	ABCDE	ABCDE
18	18	ABCDE	ABCDE
18	18	ABCDE	ABCDE
18	18	ABCDE	ABCDE
24	12	ABCDEFG	A B C
24	12	ABCDEFG	A B C
24	12	ABCDEFG	A B C
24	18	ABCDEFG	ABCDE
24	18	ABCDEFG	ABCDE
24	18	ABCDEFG	ABCDE
24	18	ABCDEFG	ABCDE
24	18	ABCDEFG	ABCDE
24	18	ABCDEFG	ABCDE

APPLICATION:
 -DESIGNED FOR USE AS JUNCTION BOXES AND PULL BOXES. FOR FLUSH INSTALLATIONS, FLUSH COVERS AND TELEPHONE FRONTS MUST BE ORDERED SEPARATELY.

CONSTRUCTION:
 -FABRICATED IN ACCORDANCE WITH UL SPECIFICATIONS FROM CODE GAUGE STEEL. -FLAT, REMOVABLE COVERS FASTENED WITH PLATED STEEL SCREWS. -KEYHOLE SCREW SLOTS IN THE COVER PERMIT REMOVAL OF THE COVER WITHOUT EXTRACTING THE SCREWS. -VARIOUS SIZES OF EASILY REMOVABLE CONCENTRIC KNOCKOUTS ON ALL FOUR SIDES. -MOUNTING HOLES ON BACK OF BOX.

FINISH:
 -SCREW COVER BOXES ARE PROVIDED IN G-90U GALVANIZED AND ANSI 61 GRAY POLYESTER POWDER COATING.

APPROVAL: _____



E
 E-BOX
 101 Air Park Industrial Road
 Alabaster, Alabama 35007
 Phone: (205)663-9189
 Fax: (205)663-9587

